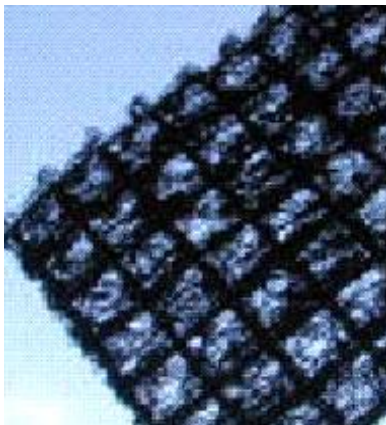


MACMAT® R GEOMAT WITH POLYMERIC REINFORCEMENT

MACMAT		R1 010	R1 020	R1 035	R1 055	R1 080	R1 110	R1 200
GEOMAT								
Polymer		POLYPROPYLENE						
Mass per unit area (EN ISO 9864)	g/m ²	500 (±100)						
Melting point (ISO 306)	°C	150						
Density (ISO 1183)	kg/m ³	900						
UV resistance		STABILIZED						
REINFORCEMENT								
Type		PP extruded geogrid	Woven geogrid done by high tenacity polyester yarns core with a polymeric protective coating					
Mesh opening size - longitudinal direction	mm	40 (±10)	35 (±15)					
Mesh opening size - transversal direction	mm	30 (±10)	30 (±10)					
REINFORCEMENT MECHANICAL PROPERTIES⁽¹⁾								
Mechanical strength - longitudinal ⁽²⁾ (EN ISO 10319)	kN/m	10	20	35	55	80	110	200
Strain at max load - longitudinal (EN ISO 10319)	%	12 (±2.0)	12 (±2.0)	12 (±2.0)	12 (±2.0)	12 (±2.0)	13 (±2.0)	13 (±2.0)
GEOCOMPOSITE PHYSICAL PROPERTIES (TYPICAL VALUES)								
Mass per unit area (EN ISO 9864)	g/m ²	650 (±100)	650 (±100)	680 (±100)	700 (±100)	790 (±100)	820 (±100)	1000 (±100)
Voids index	%	>90	>90	>90	>90	>90	>90	>90
Nominal thickness at 2 kPa (EN ISO 9863-1)	mm	15 (±2.0)	15 (±2.0)	15 (±2.0)	15 (±2.0)	15 (±2.0)	15 (±2.0)	15 (±2.0)
Roll length ⁽³⁾	m	40	40	40	40	40	40	40
Roll width ⁽⁴⁾	m	4.0 (2.0)	4.35 (2.15)	4.35 (2.15)	4.35 (2.15)	4.35 (2.15)	4.35 (2.15)	4.35 (2.15)
Roll area	m ²	120 (60)	174 (86)	174 (86)	174 (86)	174 (86)	174 (86)	174 (86)



- (1) The mechanical performance of the reinforcement and the one of the composite are practically the same. Please check that during the testing operation the geocomposite is properly locked to the testing jaws in order to avoid sliding phenomena or mechanical damages of the reinforcement itself. More than that check that the composite has been properly pre-tensioned in order to recover geometrical deformations of the reinforcement grid eventually occurred during the manufacturing process of the composite.
- (2) Intermediate mechanical resistances of the composite are available on request. All the characteristics of these intermediate geocomposite grades are the same of the others as reported in the data sheet, with the only exception of the weight as such value is directly dependent on the weight of the grid reinforcement.
- (3) Further dimensions are available on request; check feasibility with our technical-commercial dpt.
- (4) The standard width is 4.35 m; other dimensions are available on request. Check feasibility with our technical-commercial dpt.

For the optimisation and improvement process of the technical characteristics of the products, the manufacturer reserves the right to modify the standard characteristics of the product without any notice. The informations contained herein are to the best of our knowledge accurate, but since the circumstances and conditions in which it may be used are beyond our control, we do not accept any liability for any loss or damage, however arising, which results directly or indirectly from the use of such information, nor we do offer any warranty or immunity against patent infringement.

Officine Maccaferri S.p.A.

Via Kennedy, 10 - 40069 Zola Predosa (BO) - Italy

Tel. (+39) 051-6436000 - Fax (+39) 051-6436201

E-mail: comes@maccaferri.com - Web site: www.officinemaccaferri.com

Bureau Veritas Certified Quality System Company
with SINCERT's and UKAS' s accreditation.